

MA

SCAFFOLDING FORMWORK

MA Scaffolding Formwork Strength, Innovation & Excellence. MA scaffolding formwork is a leading provider of formwork and scaffolding solutions, catering to large-scale infrastructure and construction projects across India.



PRODUCT CATALOGUE

ABOUT US



MA Scaffolding Formwork is a professional fabrication manufacturing company serving the construction and infrastructure sector with reliable scaffolding and formwork solutions. We specialize in the manufacturing of heavy formwork systems designed and fabricated as per customer drawings and project specifications.

Our manufacturing capabilities include scaffolding materials and precision moulds such as drain moulds, crash barrier moulds, friction slab moulds, and box culvert moulds. Each product is engineered for durability, repeat usage, and compliance with industry standards.

With a strong focus on quality, customization, and on-time delivery, MA Scaffolding Formwork is committed to supporting projects with dependable fabrication solutions that enhance safety, efficiency, and long-term performance.

CONTACT US

MA Scaffolding Formwork



Address:- C-96, Baghpat industrial area, Pin Code 250609, UP



9997180102/8899301557



sales01.mascaffoldingformwork@gmail.com

Advanced Manufacturing Infrastructure



Key Manufacturing Equipment

Sheet Metal Processing

CNC Laser Cutting Machine
CNC Plasma Cutting Machine
CNC Shearing Machine
CNC Bending Machine
Hydraulic Press Brake

Heavy Fabrication Equipment

6 Nos. Heavy Duty Power Press Machines
Hexa Cutting Machine
Band Saw Machine
Profile Cutting Machines
Drilling & Machining Equipment

Welding & Assembly Infrastructure

MIG Welding Machines
ARC Welding Machines
Plasma Welding Equipment
Gas Cutting Equipment
Assembly & Fabrication Stations

Our Strength

**Advanced Machinery + Skilled Workforce + Engineering Expertise =
Precision Manufacturing & Timely Project Delivery**

VERTICALS



- **HIGHWAY PROJECT**
- **METRO PROJECT R**
- **RAILWAYS PROJECT**
- **POWER PROJECT T**
- **TUNNEL PROJECT D**
- **DAM PROJECT**



HEAVY SEGMENT FORMWORK

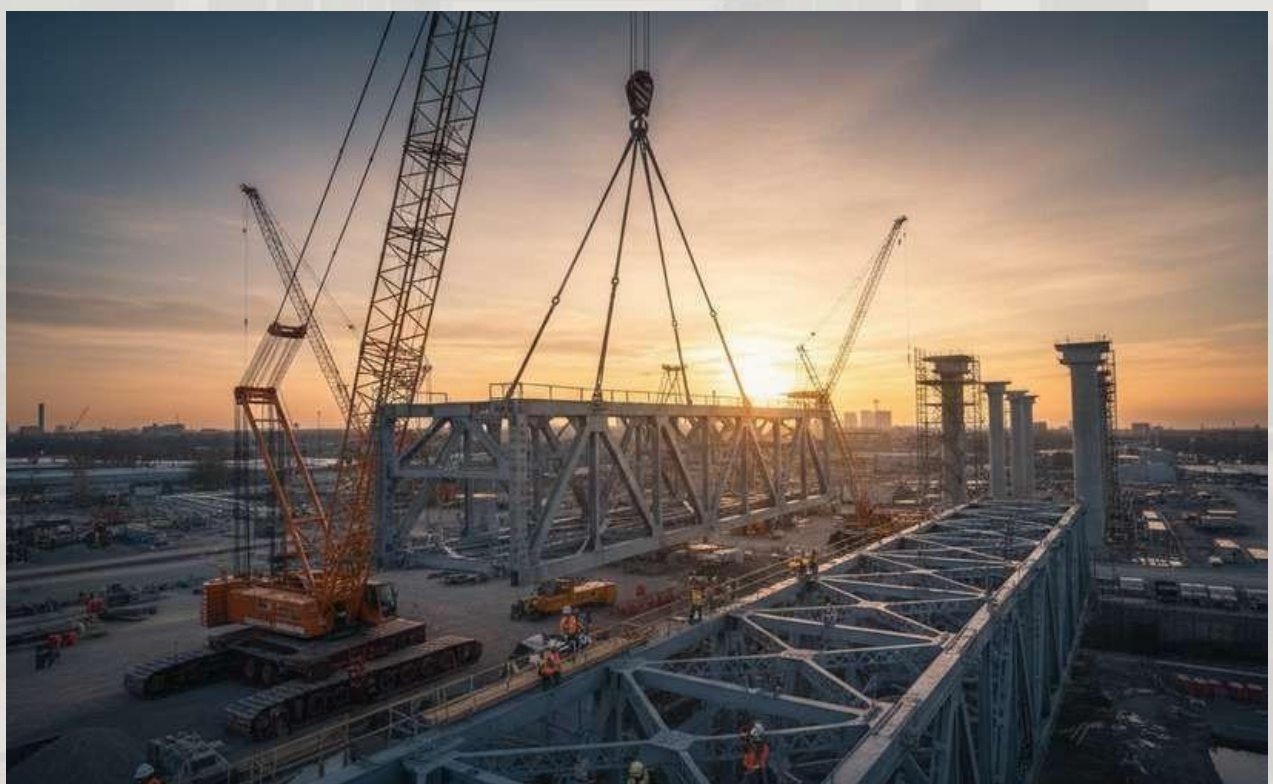


PIER FORMWORK

PIER CAP



TRUSS



TOWER STRUCTURE



SOLAR STRUCTURE



BOX CULVERTS



FOOT OVER BRIDGE



CRIBS



T-GIRDER, I-GIRDER & U-GIRDER



PSC GIRDER



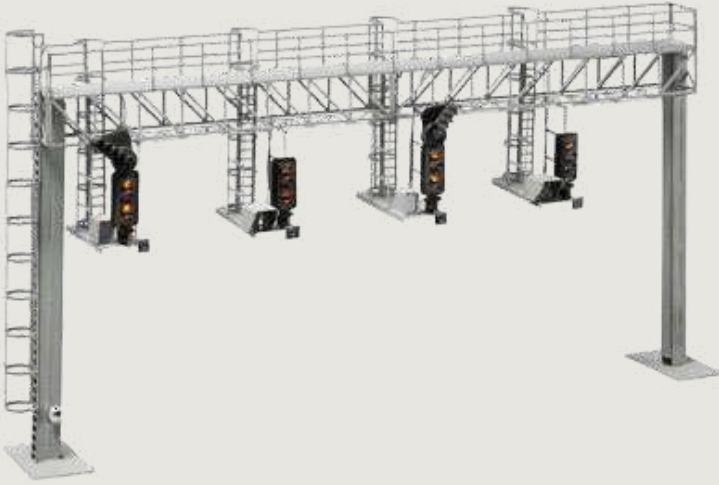
FRICTION SLAB MOULD



RE WALL MOULD



SINAGE GANTRY



CANOPY



Foot Over Bridge



CASTING YARD





MATERIAL ON THE WAY





SCAFFOLDING CLAMP

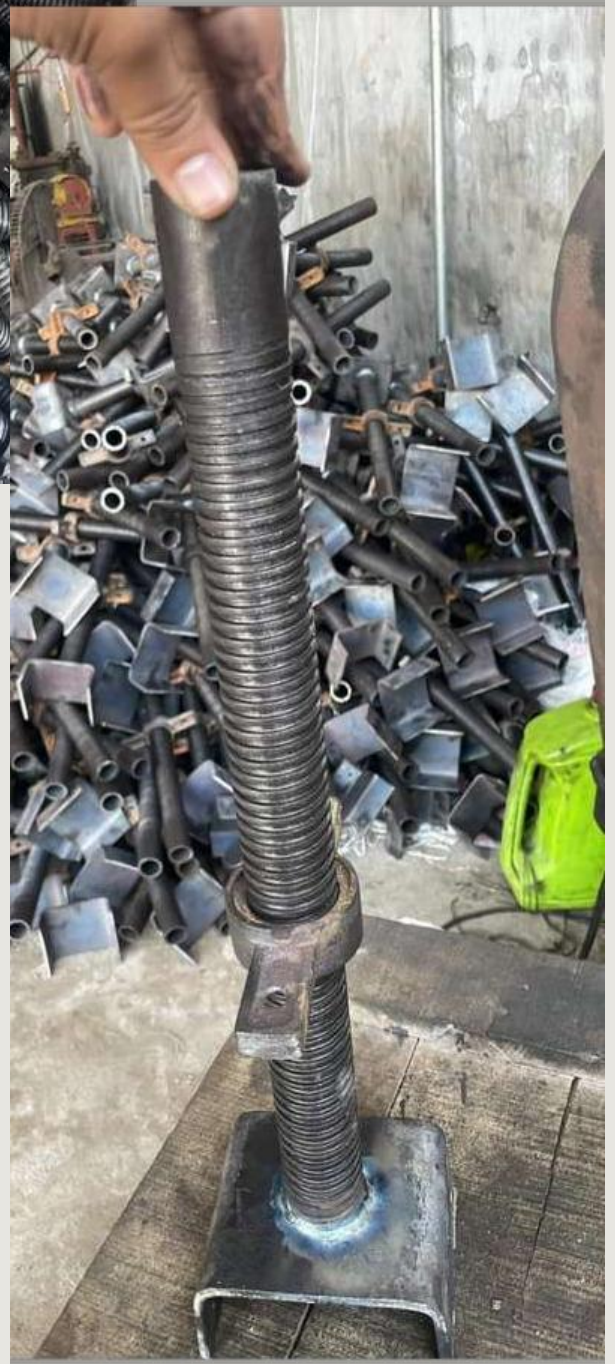


METAL JACK



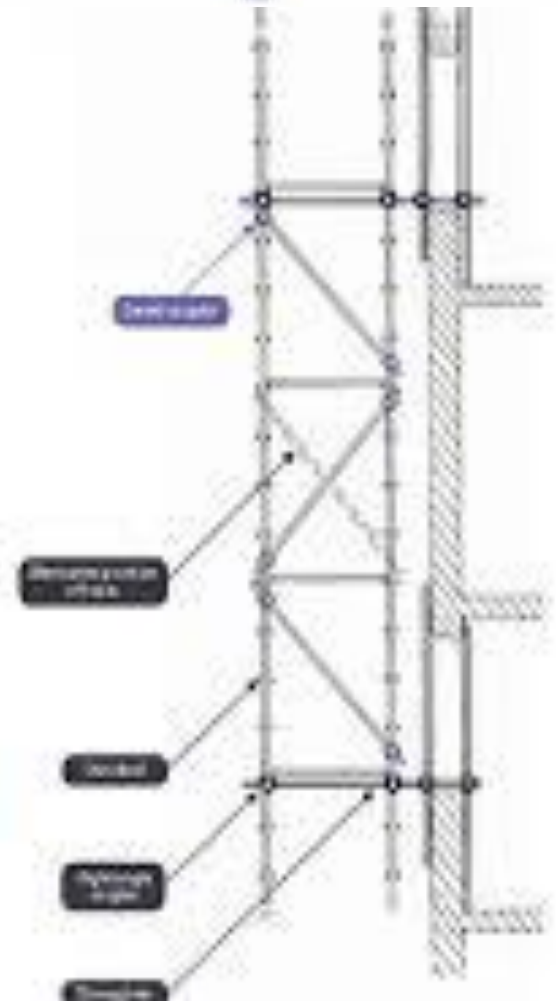
SCAFFOLDING













OUR EXISTING CLIENTS



- **H.M.B.S Textiles Pvt. Ltd**
- **SKL Build (INDIA) Pvt. Ltd**
- **Jainco Enterprises Pvt. Ltd**
- **Raj Corporation Ltd.**
- **All Grace Developers Pvt. Ltd.**
- **R&C Infraengineers Pvt. Ltd**
- **SRM Contractors Ltd.**
- **Bharat Construction (India) Pvt. Ltd.**
- **Keen & Core Developers Pvt. Ltd.**
- **MB Infra Projects Pvt. Ltd.**
- **M/S Kanhaiya Lal Aggarwal Pvt. Ltd**
- **M/S Digvijay Shardha Infrastructure Pvt. Ltd.**
- **Mehul Geo Projects LLP**
- **Kaluwala Construction Pvt. Ltd.**
- **CP Systems Pvt. Ltd**
- **Gawar Construction Ltd**
- **Magcon Infratech Pvt. Ltd.**

MA

SCAFFOLDING FORMWORK

THANK YOU

CONTACT US

MA Scaffolding Formwork



Address:- C-96, Baghpat industrial area, Pin Code
250609, UP



9997180102/8899301557



sales01mascaffoldingformwork@gmail.com